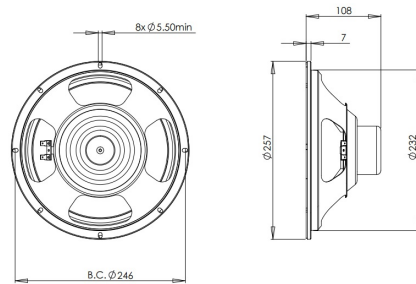


# 10CL51

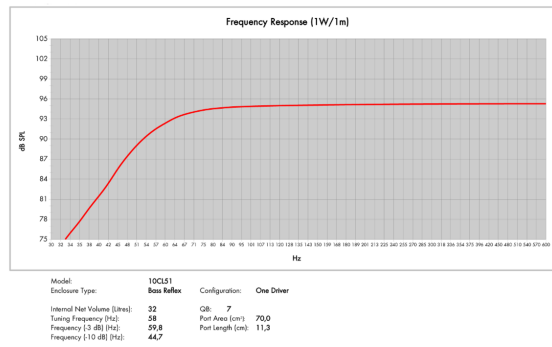
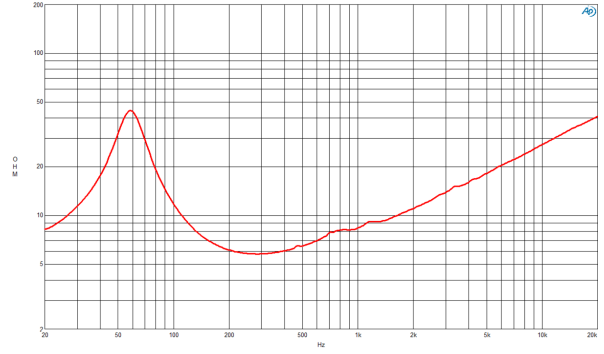
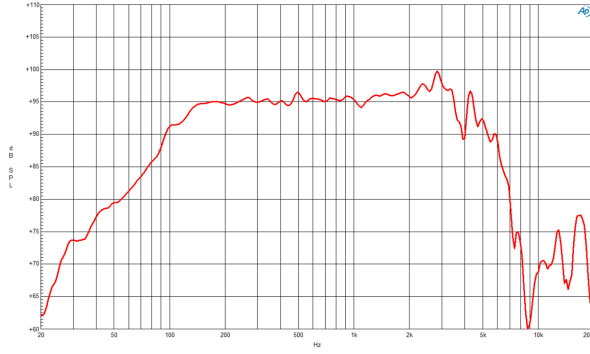
**8Ω****LF Drivers - 10.0 Inches**

- 300 W continuous program power capacity
- 51 mm (2 in) aluminium voice coil
- 60 - 4000 Hz response
- 96 dB sensitivity



# 10CL51

LF Drivers- 10.0 Inches



## SPECIFICATIONS

|  |                   |
|--|-------------------|
| Nominal Diameter                       | 250 mm (10.0 in)  |
| Nominal Impedance                      | 8 Ω               |
| Minimum Impedance                      | 5.8 Ω             |
| Nominal Power Handling <sup>1</sup>    | 150 W             |
| Continuous Power Handling <sup>2</sup> | 300 W             |
| Sensitivity <sup>3</sup>               | 96.0 dB           |
| Frequency Range                        | 60 - 4000 Hz      |
| Voice Coil Diameter                    | 51 mm (2.0 in)    |
| Winding Material                       | Aluminium         |
| Former Material                        | Glass Fibre       |
| Winding Depth                          | 15.0 mm (0.59 in) |
| Magnetic Gap Depth                     | 8.0 mm (0.31 in)  |
| Flux Density                           | 1.05 T            |

## DESIGN

|                       |  |
|-----------------------|--|
| Surround Shape        | Double Roll                                  |
| Cone Shape            | Exponential                                  |
| Magnet Material       | Neodymium Inside Slug                        |
| Spider                | Single                                       |
| Pole Design           | Straight Pole                                |
| Woofer Cone Treatment | None   |
| Recommended Enclosure | 32.0 dm <sup>3</sup> (1.13 ft <sup>3</sup> ) |
| Recommended Tuning    | 58 Hz  |

## PARAMETERS<sup>4</sup>

|                     |   |
|---------------------|---|
| Resonance Frequency | 58 Hz   |
| Re                  | 5.2 Ω   |
| Q <sub>es</sub>     | 0.42  |
| Q <sub>ms</sub>     | 3.5   |
| Q <sub>ts</sub>     | 0.38  |
| V <sub>as</sub>     | 36.0 dm <sup>3</sup> (1.27 ft <sup>3</sup> )  |
| S <sub>d</sub>      | 320.0 cm <sup>2</sup> (49.6 in <sup>2</sup> ) |
| η <sub>0</sub>      | 1.57 %  |
| X <sub>max</sub>    | ± 5.5 mm                                      |
| X <sub>var</sub>    | ± 5.5 mm                                      |
| M <sub>ms</sub>     | 30.5 g  |
| Bl                  | 11.6 Txm                                      |
| Le                  | 0.8 mH  |
| EBP                 | 138 Hz  |

**MOUNTING AND SHIPPING INFO**

|                             |   |
|-----------------------------|---|
| Overall Diameter            | 257 mm (10.1 in)                            |
| Bolt Circle Diameter        | 246 mm (9.7 in)                             |
| Baffle Cutout Diameter      | 232.0 mm (9.1 in)                           |
| Depth                       | 108 mm (4.25 in)                            |
| Flange and Gasket Thickness | 7 mm (0.28 in)                              |
| Air Volume Occupied by Horn | 1.0 dm <sup>3</sup> (0.03 ft <sup>3</sup> ) |
| Net Weight                  | 1.3 kg (2.87 lb)                            |
| Shipping Units              | 1   |
| Shipping Weight             | 1.9 kg (4.19 lb)                            |
| Shipping Box                | 295x314x175 mm (11.61x12.36x6.89 in)        |

**SERVICE KIT**

|            |            |
|------------|------------|
| Recone kit | RCK10CL518 |
|------------|------------|

1. 2 hours test made with continuous pink noise signal within the range Fs-10Fs. Power calculated on rated minimum impedance. Loudspeaker in free air.
2. Power on Continuous Program is defined as 3 dB greater than the Nominal rating.
3. Applied RMS Voltage is set to 2.83 V for 8 ohms Nominal Impedance.
4. Thiele-Small parameters are measured after a high level 20 Hz sine wave preconditioning test.